



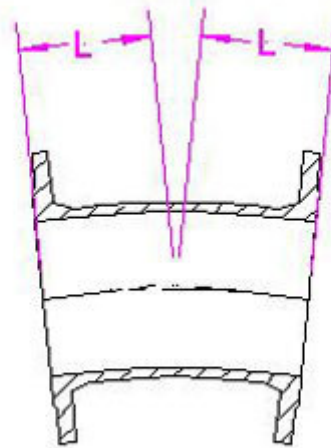
AL SAAD CO

ENGINEERING CONSULTING

Ductile Iron pipes Flanged Fittings

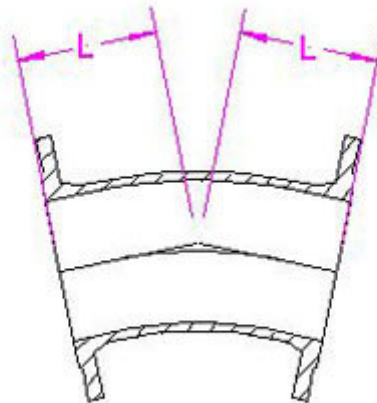
11¼° Flanged Bend (Class K12)

Nominal Bore mm	Dimensions		Weight	
	Series A L mm	Series B L mm	Epoxy Kgs.	Lined kgs.
80	130	110	11	12
100	140	115	13	14
125	111	-	21	22
150	160	130	31	33
200	180	145	62	66
250	350	165	87	93
300	400	175	94	102
350	190	-	72	83
400	205	-	87	97
450	349	-	136	147
500	375	-	177	191
600	426	-	268	287
700	478	-	343	372
800	529	-	451	488
900	581	-	592	638
1000	632	-	778	833
1200	735	-	1220	1297
1400	835	-	1643	1797
1600	940	-	2338	2536



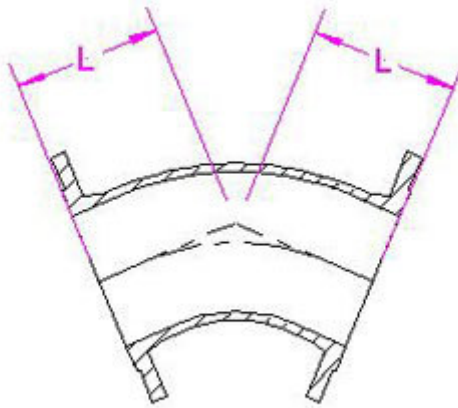
22½° Flanged Bend (Class K12)

Nominal Bore mm	Dimensions		Weight	
	Series A L mm	Series B L mm	Epoxy Kgs.	Lined Kgs.
80	130	120	11	12
100	140	130	12	13
125	105	140	16	17
150	160	150	21	23
200	180	170	27	29
250	350	190	63	67
300	400	210	79	85
350	210	230	82	90
400	239	250	107	117
450	349	-	135	146
500	375	-	175	190
600	426	-	267	286
700	476	-	342	371
800	529	-	448	485
900	581	-	588	633
1000	632	-	773	828
1200	735	-	1213	1289
1400	835	-	1635	1788
1600	940	-	2235	2522



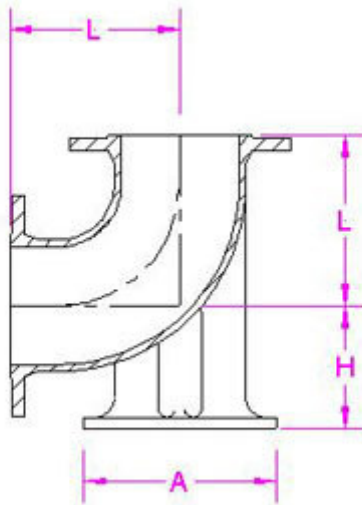
45° Flanged Bend (Class K12)

Nominal Bore mm	Dimensions		Weight	
	Series A L mm	Series B L mm	Epoxy Kgs.	Lined Kgs.
80	130	-	10	11
100	140	-	11	12
125	150	-	15	16
150	160	-	19	20
200	180	-	27	29
250	350	245	54	58
300	400	275	82	88
350	298	-	94	102
400	324	-	122	132
450	350	-	152	164
500	375	-	200	215
600	426	-	304	324
700	478	-	335	363
800	529	-	444	480
900	581	-	582	620
1000	632	-	757	810
1200	750	-	1187	1261
1400	775	-	1599	1747
1600	845	-	2273	2463



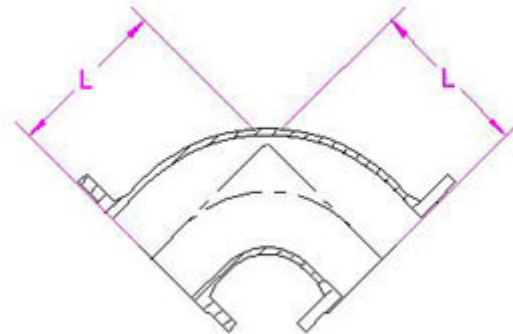
90° Flanged Duckfoot Bend (Class K12)

Nominal Bore mm	Dimensions			Weight	
	L mm	H mm	A mm	Epoxy Kgs.	Lined Kgs.
80	165	110	180	13	14
100	180	125	200	16	17
150	220	160	250	31	32
200	260	190	300	54	56
250	350	225	350	87	91
300	400	255	400	124	129
350	450	290	450	169	171
400	500	320	500	225	239
450	550	355	550	258	283
500	600	385	600	340	370
600	700	450	700	520	550
700	800	515	800	566	625
800	900	580	900	798	850
900	1000	645	1000	1050	1114
1000	1100	710	1100	1380	1459
1200	1300	775	1300	2090	2175
1400	1400	840	1400	3023	3118
1600	1500	905	1500	4011	4116



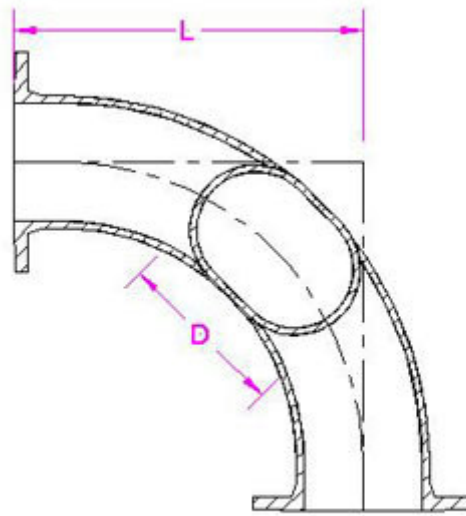
90° Flanged Short Radius Bend (Class K12)

Nominal Bore mm	Dimensions L mm	Weight	
		Epoxy Kgs.	Lined Kgs
50	150	8	9
80	165	9	10
100	180	11	12
125	200	18	19
150	220	22	23
200	260	32	34
250	350	53	57
300	400	75	80
350	450	110	122
400	500	145	159
450	550	184	201
500	600	242	262
600	700	373	403
700	800	463	423
800	900	570	623
900	1000	750	815
1000	1100	998	1080
1200	1300	1573	1685
1400	1270	1943	2135
1600	1270	2524	2744

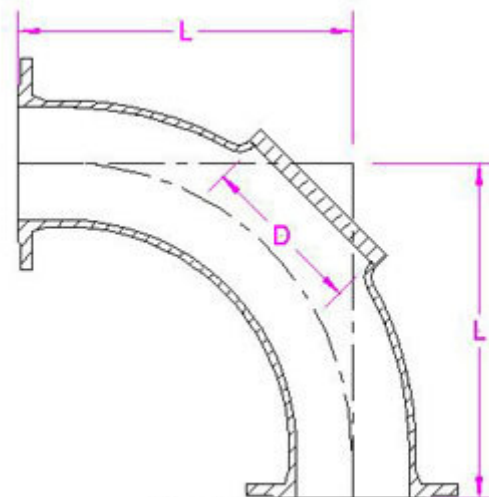


90° Long Radius Access Bend Type A & B (Class K12)

Nominal Bore mm	Dimensions L mm	Weight	
		Epoxy Kgs	Lined kgs.
80	380	14	17
100	400	18	24
150	450	30	40
200	500	46	61
250	550	65	93
300	600	90	117



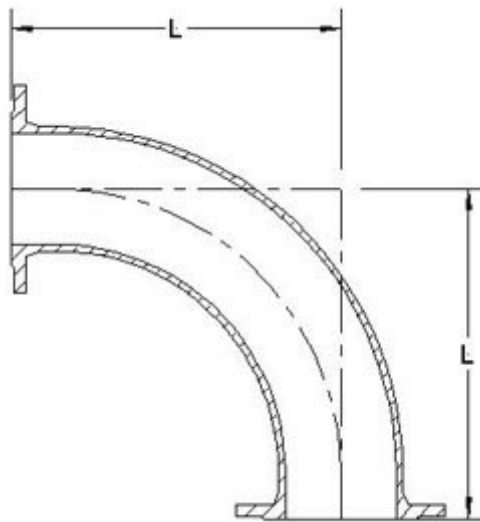
Type A



Type B

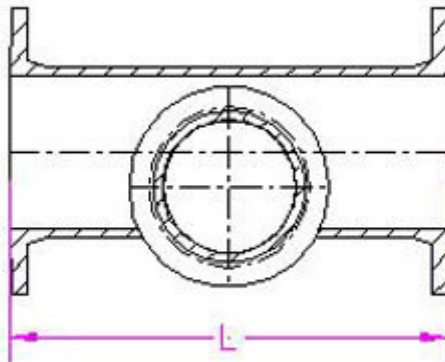
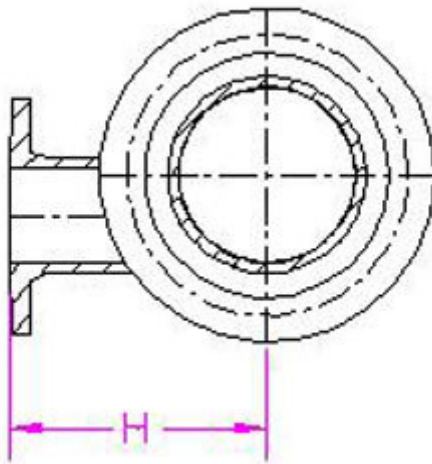
90° Long Radius Bend (Class K12)

Nominal Bore mm	Dimensions L mm	Weight	
		Epoxy Kgs.	Lined Kgs.
80	380	14	16
100	400	18	21
150	450	30	34
200	500	46	52
250	550	65	74
300	600	90	101
350	650	121	135
400	700	157	174
450	750	197	217
500	800	252	276
600	900	379	412



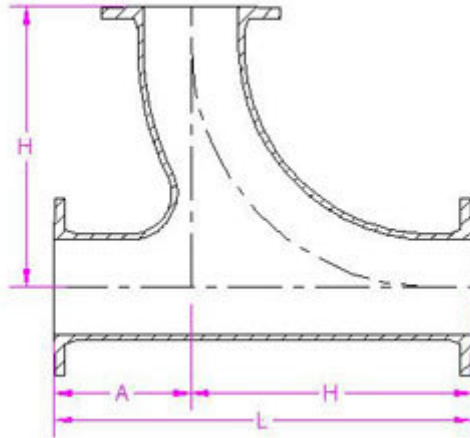
All Flange Level Invert Tee (Class K14)

Nominal Bore		Dimensions		Weight	
Body	Branch			Epoxy	Lined
mm	mm	L mm	H mm	Kgs.	Kgs.
100	80	360	195	20	21
150	80	440	220	30	31
200	80	520	250	43	45
250	100	700	275	69	73
300	80	800	305	92	98
300	100	800	305	96	101



All Flange Radial Tee (Class K14)

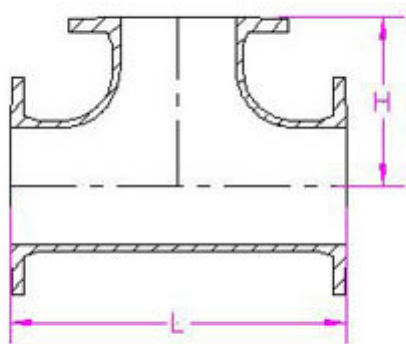
Nominal Bore mm	Dimensions			Weight	
	L mm	H mm	A mm	Epoxy Kgs.	Lined Kgs.
80	545	380	165	23	25
100	580	400	180	30	32
150	670	450	220	49	52
200	760	500	260	73	79
250	900	550	350	106	114
300	1000	600	400	146	157
350	1100	650	450	204	226
400	1200	700	500	298	319
450	1300	750	550	375	400
500	1400	800	600	423	444
600	1600	900	700	633	660



All Flange Tee (Class K14)

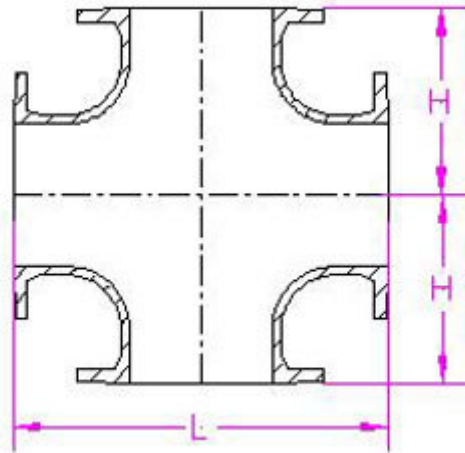
Nominal Bore		Dimensions				Weight	
Body	Branch	Series A		Series B		Epoxy	Lined
mm	mm	L mm	H mm	L mm	H mm	Kgs.	Kgs.
50	50	300	150	-	-	13	13
80	50	330	160	-	-	14	14
80	80	330	165	-	-	16	16
100	50	360	170	-	-	17	18
100	80	360	175	330	170	18	19
100	100	360	180	-	-	19	20
125	50	400	185	-	-	20	21
125	80	400	190	-	-	22	23
125	125	400	200	-	-	25	26
150	50	440	200	-	-	29	30
150	80	440	205	360	200	30	31
150	100	440	210	380	205	31	32
150	125	440	215	-	-	34	35
150	150	440	220	-	-	34	35
200	80	520	235	380	225	40	42
200	100	520	240	400	230	41	43
200	150	520	250	460	245	44	46
200	200	520	260	-	-	49	52
250	80	700	265	405	265	65	69
250	100	700	275	425	270	67	71
250	150	700	300	485	280	70	74
250	200	700	325	540	290	75	80
250	250	700	350	600	300	87	91
300	80	800	290	425	295	91	97
300	100	800	300	450	300	93	99
300	150	800	325	505	310	96	102
300	200	800	350	565	320	101	107
300	250	800	375	620	330	108	114
300	300	800	400	680	340	117	124
350	80	850	325	-	-	131	140
350	150	850	325	-	-	135	143
350	300	850	425	-	-	158	144
350	350	850	425	-	-	167	173
400	80	900	350	-	-	166	172
400	100	900	350	-	-	168	174
400	150	900	350	-	-	155	169
400	200	900	350	-	-	159	173
400	250	900	350	-	-	161	175
400	300	900	450	-	-	177	191
400	400	900	450	-	-	194	210
450	80	950	375	-	-	187	203
450	100	950	375	-	-	188	204
450	150	950	375	-	-	190	206
450	200	950	375	-	-	193	209
450	300	950	475	-	-	213	230
450	350	950	475	-	-	221	239
450	400	950	475	-	-	229	248

Nominal Bore		Dimensions				Weight	
Body	Branch	Series A		Series B		Epoxy	Lined
mm	mm	L mm	H mm	L mm	H mm	Kgs.	Kgs.
450	450	950	475	-	-	237	257
500	80	1000	400	-	-	237	255
500	100	1000	400	-	-	241	259
500	150	1000	400	-	-	241	259
500	200	1000	400	-	-	245	264
500	300	1000	500	-	-	279	258
500	500	1000	500	-	-	304	325
600	150	1100	450	-	-	379	398
600	200	1100	450	-	-	380	399
600	300	1100	550	-	-	369	396
600	450	1100	550	-	-	404	431
600	500	1100	550	-	-	408	425
600	600	1100	550	-	-	491	519
700	400	870	555	-	-	381	409
700	700	1200	600	-	-	548	589
800	400	910	615	-	-	472	512
800	600	1350	645	-	-	699	749
800	800	1350	675	-	-	741	794
900	400	950	675	-	-	578	630
900	600	1500	705	-	-	900	960
900	900	1500	750	-	-	974	1040
1000	400	990	735	-	-	732	791
1000	600	1650	765	-	-	1112	1182
1000	1000	1650	825	-	-	1290	1370
1200	600	1250	885	-	-	1259	1328
1200	1200	1950	975	-	-	2055	2169
1400	600	1550	980	-	-	1692	1823
1400	1200	1750	1025	-	-	2534	2624
1600	600	1450	1125	-	-	2240	2395
1600	1200	2300	1180	-	-	3238	3328



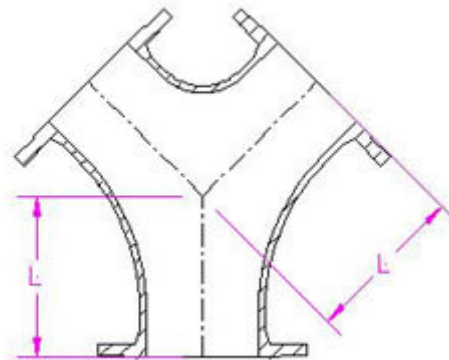
All Flanged Cross (Class K 14)

Nominal Bore mm	Dimensions		Weight	
	L mm	H mm	Epoxy Kgs.	Lined Kgs
80	330	165	21	22
100	360	180	25	25
150	440	220	41	43
200	520	260	61	64
250	700	350	100	106
300	800	400	143	151



All Flanged Y Pipe (Class K14)

Nominal Bore mm	Dimensions L mm	Weight	
		Epoxy Kgs.	Lined Kgs.
80	165	15	16
100	180	18	20
150	220	33	34
200	260	48	52
250	350	82	86
300	400	117	122
350	450	175	180
400	500	231	238



Blank Flange (Class K12)

Nominal Bore mm	Weight Kgs.
50	3
60	3
65	3
80	4
100	4
150	6
200	11
250	17
300	24
350	35
400	46
450	60
500	80
600	125
700	163
800	264
900	302
1000	350
1200	635
1400	993
1600	1462

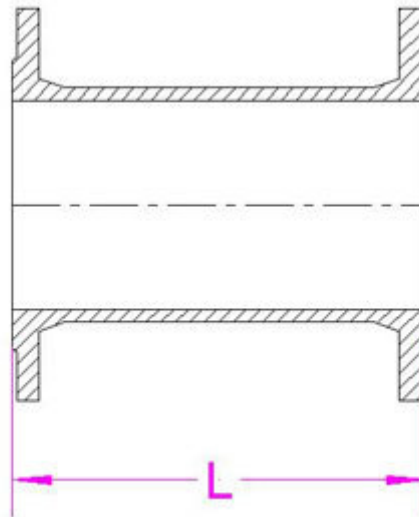
Please Note: Blank Flanges UTI 300mm NB are the flat design. 350mm NB and above are the dished design.



Double Flanged Cast Riser Pipes (Class K12)

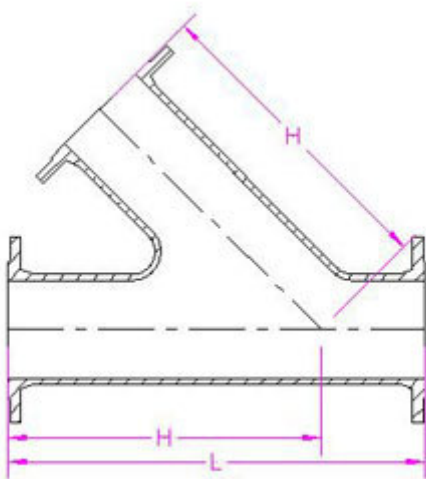
Nominal Bore mm	Length L mm	Weight	
		Epoxy Kgs.	Lined Kgs.
50	190	6	n/a
50	200	6	n/a
50	300	7	n/a
50	400	8	n/a
80	100	7	8
80	150	8	9
80	200	8	9
80	225	9	9
80	250	9	10
80	300	10	10
80	350	10	11
80	400	11	12
80	450	12	13
80	500	12	15
80	600	14	16
80	630	14	16
80	650	14	16
80	700	15	17
80	1000	19	21
100	100	9	10
100	115	9	10
100	150	9	10
100	200	10	11
100	250	11	12
100	300	12	13
100	350	13	14
100	400	14	16
100	450	15	17
100	500	15	17
100	600	17	19
100	1000	24	26
150	100	12	14
150	150	13	15
150	200	14	16
150	250	15	17
150	300	17	19
150	350	19	21
150	400	20	22
150	450	22	24
150	500	25	27
150	1000	38	41
200	200	19	21
200	300	25	27
200	400	29	31
200	500	33	35

Nominal Bore mm	Length L mm	Weight	
		Epoxy Kgs.	Lined Kgs.
250	200	27	29
250	300	31	33
250	500	39	42
300	250	42	46
300	300	47	50
300	500	59	64

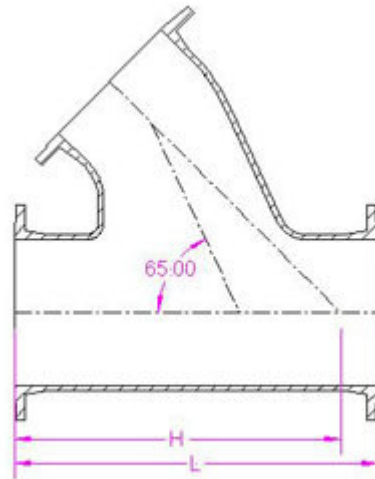


Flanged 45° Angle Branch (Class K14)

Nominal Bore		Dimensions		Weight	
				Epoxy Kgs.	Lined Kgs
mm	Type	L mm	H mm		
80	N	500	375	21	22
100	N	540	405	27	29
150	N	640	480	47	50
200	N	735	560	71	76
250	N	830	640	105	111
300	N	930	715	147	156
350	M	880	790	168	185
400	M	970	870	205	220
450	M	1060	950	277	297
500	M	1140	1025	353	373
600	M	1310	1180	541	578



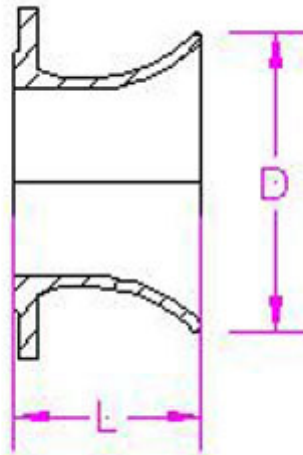
Type N



Type M

Flanged Bellmouth (Class K12)

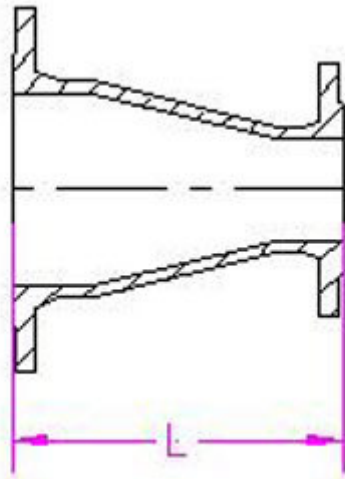
Nominal Bore	Dimensions		Weight
mm	L mm	D mm	Kgs.
80	135	160	5
100	140	185	6
150	155	245	10
200	170	310	15
250	190	370	21
300	210	435	29
350	225	495	39
400	245	560	51
450	260	620	63
500	280	685	83
600	300	810	122
700	340	945	154



Flanged Concentric Taper (Class K12)

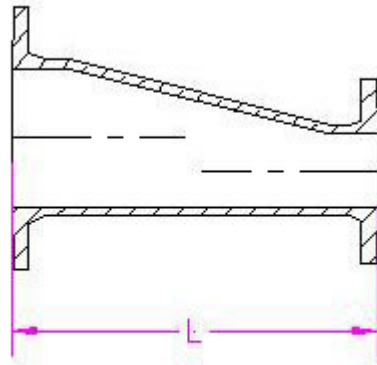
Tapering		Dimensions	Standard	Weight	
From	To			Epoxy	Linded
NB mm	NB mm	L mm	Series A / B	Kgs.	Kgs.
65	50	200	DIN	8	8
80	50	200	DIN	7	8
80	65	200	DIN	9	10
100	50	200	DIN	9	10
100	65	200	DIN	11	12
100	80	195	B	8	9
100	80	200	DIN. A	9	10
125	80	200	DIN	11	12
125	100	200	DIN	12	13
150	80	200	DIN	13	14
150	80	260	B	14	15
150	80	400	A	16	17
150	100	200	DIN	13	14
150	100	220	B	14	15
150	100	300	A	15	16
150	125	200	DIN	19	20
200	80	300	DIN	20	22
200	80	390	B	22	24
200	80	600	A	26	28
200	100	300	DIN	20	22
200	100	330	B	21	23
200	100	600	A	27	29
200	150	235	B	21	23
200	150	300	DIN. A	23	24
250	100	300	DIN	28	30
250	100	455	B	30	33
250	100	600	A	34	37
250	150	300	DIN	29	31
250	150	345	B	31	33
250	150	600	A	38	40
250	200	250	B	29	31
250	200	300	DIN. A	30	32
300	100	300	DIN	35	37
300	100	560	B	41	44
300	100	600	A	41	44
300	150	300	DIN	37	39
300	150	470	B	42	45
300	150	600	A	46	49
300	200	300	DIN	39	41
300	200	360	B	41	43
300	200	600	A	51	55
300	250	265	B	39	41
300	250	300	A	40	42
350	200	600	A	61	66
350	250	600	A	67	73
350	300	300	A	52	55

Tapering		Dimensions	Standard	Weight	
From	To			Epoxy	Lined
NB mm	NB mm	L mm	Series A / B	Kgs.	Kgs.
400	200	600	A	74	78
400	250	600	A	77	83
400	300	600	A	84	90
400	350	300	A	67	71
450	250	600	A	88	95
450	300	600	A	95	102
450	350	600	A	104	113
450	400	300	A	81	86
500	250	700	A	124	113
500	300	600	A	111	120
500	400	600	A	130	140
500	450	300	A	102	107
600	400	600	A	164	175
600	450	600	A	175	187
600	500	300	A	190	204
700	450	700	A	213	230
700	500	600	A	208	223
700	600	600	A	243	260
800	500	800	A	286	306
800	600	600	A	275	293
800	700	600	A	295	315
900	450	1100	A	380	411
900	500	1000	A	377	406
900	600	800	A	366	391
900	700	600	A	333	354
900	800	600	A	364	386
1000	500	1200	A	501	538
1000	600	1000	A	487	520
1000	700	800	A	452	482
1000	800	600	A	418	442
1000	900	600	A	454	479
1200	700	1260	A	768	821
1200	800	1070	A	765	812
1200	900	880	A	708	749
1200	1000	800	A	720	759
1200	1100	600	A	666	696
1400	1200	1000	A	1070	1143
1600	1400	1000	A	1338	1437



Flanged Eccentric Tapers (Class K12)

Tapering		Dimensions	Weight	
From	To		Epoxy	Lined
NB mm	NB mm	L mm	Kgs.	Kgs.
100	80	200	9	10
150	80	400	16	17
150	100	300	15	16
200	80	600	26	28
200	100	600	27	29
200	150	300	22	24
250	150	600	38	40
250	200	300	30	32
300	150	600	46	49
300	200	600	51	54
300	250	300	40	43
400	200	600	74	78
400	250	600	77	81
400	300	600	84	88
400	350	300	68	71
450	250	600	91	96
450	300	600	95	99
450	350	600	98	104
450	400	300	88	93
500	250	300	118	124
500	400	300	124	130
600	400	300	157	164
600	450	300	174	181
600	500	300	196	202
700	450	700	220	230
700	500	600	213	223
700	600	600	249	259
800	500	800	295	306
800	600	600	282	293
800	700	600	304	315
900	450	1100	396	411
900	500	1000	391	406
900	600	800	377	391
900	700	600	340	354
900	800	600	371	386
1000	500	1200	518	538
1000	600	1000	501	520
1000	700	800	464	482
1000	800	600	428	442
1000	900	600	464	479
1200	700	1260	796	821
1200	800	1070	790	812
1200	900	880	729	749
1200	1000	800	729	759
1200	1100	600	675	696
1400	1200	1000	1028	1070
1600	1400	1000	1407	1437



Split Puddle Flange

Nominal Size For DI Pipe	Dimensions			Weight
	H mm	L mm	A mm	Kgs.
80	260	110	100	12
100	305	110	120	15
150	390	130	172	23
200	430	130	224	28
250	490	130	276	37
300	555	130	329	46
350	610	130	381	50
400	660	150	432	62
450	725	150	483	73
500	790	150	535	85
600	900	165	638	120
700	1000	165	746	144

